



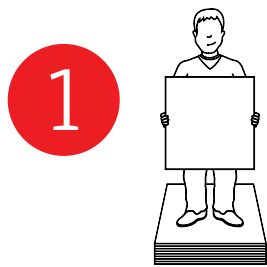
Joy Carpets & Co.

 *Environments*[™]
[commercial carpet tile]



90% of our time is spent indoors. Proper flooring is essential in creating an attractive interior where people of all ages can maximize their potential. Environments™ is an exciting collection of high-traffic carpet tile designed to enhance decor and inspire productivity in any educational, corporate, or retail space. Offered in an array of unique designs and colors, our products help to beautify interiors while also improving air quality, reducing VOCs and allergens, and regulating indoor air temperature and acoustics.

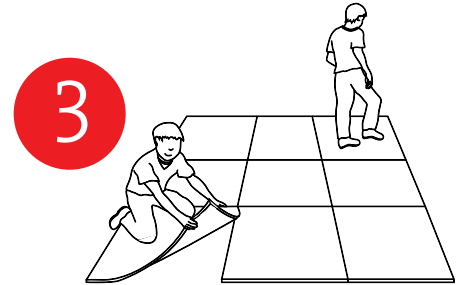
When creative, colorful, and versatile flooring is required, look with confidence to Joy Carpets to satisfy your needs. Our carpet tile is easy to install, easy to maintain, and comes with the most comprehensive warranty package in the industry. Remember...for carpet that looks good and can take it, Joy makes it!



1 Easy to handle. No hassle!



2 Easy to install. No adhesives required!



3 Easy to replace. No down time!

Specifications and Warranties

General:

Description:	Textured loop pile carpet tile
Dye Method:	Injection fluorescent dyed
Dye Resolution:	400 dpi
Fiber:	BCF Type 6,6 2-Ply Premium Nylon
Total Weight:	89 oz. / sq. yd.
Tuft Bind:	Exceeds industry standards
Gauge:	1/10 th
Pile Height:	.27 in.
Backing:	StayTac® cushion - PVC free. No adhesives required
Delamination:	Exceeds industry standards
Anti-Soil and Stain Protection:	Impervion® soil and stain treatment
Antimicrobial Treatment:	Impervion® mold, mildew, and odor protection
Tile Size:	1m x 1m (39.4" x 39.4")
Origin:	U.S.A.

Performance:

Static Electricity:	< 3.5 KV (AATCC-134), Permanent Conductive Fiber
Traffic:	Heavy commercial use
Indoor Air Quality:	Green Label Plus Certified



Flammability:

Radiant Panel:	> 0.45 watts/cm ² (ASTM – E648, Class I)
NBS Smoke Chamber:	< 450 (ASTM-E662 NFPA-258)
Methenamine Tablet:	Self-extinguishing (CPSC FF-1-70)

Maintenance:

Spot Cleaning:	Spot clean with approved carpet cleaner. Follow manufacturer recommendations. Vacuum regularly.
Professional Cleaning:	Hot water extraction. Follow manufacturer recommendations.

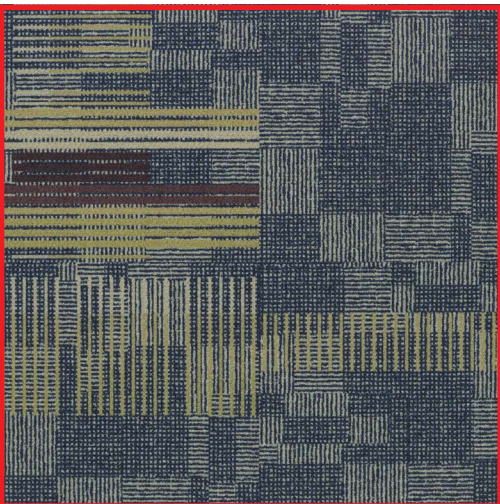
Warranties:

Lifetime Face Fiber Wear	Lifetime Tuft Bind
Lifetime Antimicrobial Protection	Lifetime Color Pattern Permanency
Lifetime Soil and Stain Protection	Lifetime Cushion Resiliency
Lifetime Antistatic Protection	Lifetime Delamination
Lifetime Floor Compatibility	Lifetime Dimensional Stability
Lifetime Floor Release	Lifetime Edge Ravel
Lifetime Moisture Resistance	

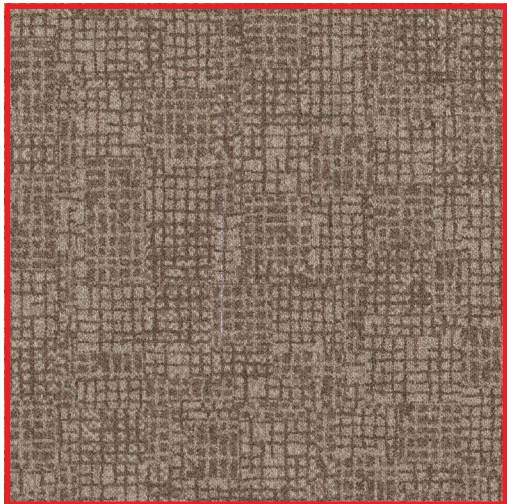
Specifications are subject to normal manufacturing tolerance. Actual carpet color may vary.



BREAK TIME™ - 963
AVAILABLE IN 15 COLORS



DOUBLE STANDARD™ - 949
AVAILABLE IN 9 COLORS



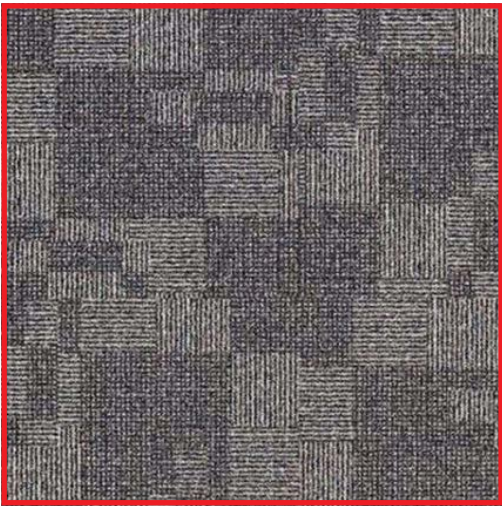
MISSION STATEMENT™ - 960
AVAILABLE IN 14 COLORS



FINE PRINT™ - 957
AVAILABLE IN 16 COLORS



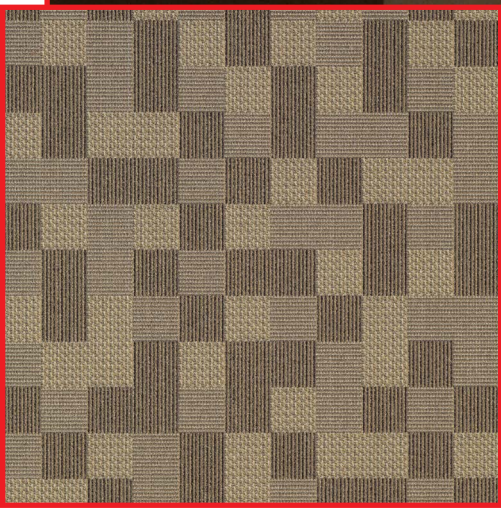
NET WORTH™ - 958
AVAILABLE IN 16 COLORS



OVERVIEW™ - 948
AVAILABLE IN 24 COLORS



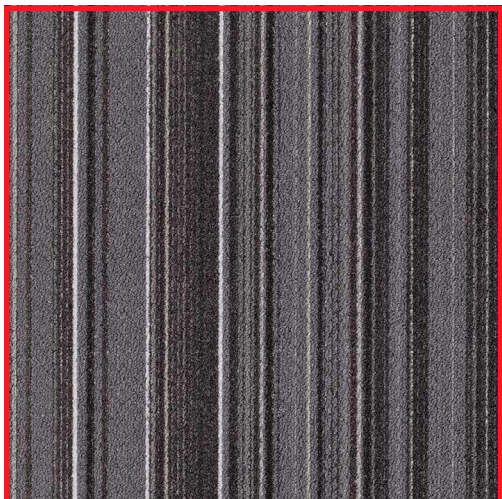
PRISM™ - 907
AVAILABLE IN 16 COLORS



ENTREPRENEUR™ - 961
AVAILABLE IN 15 COLORS



CROSS REFERENCE™ - 962
AVAILABLE IN 14 COLORS



PARALLEL™ - 946
AVAILABLE IN 28 COLORS



VELOCITY™ - 947
AVAILABLE IN 28 COLORS



SHAREHOLDER™ - 959
AVAILABLE IN 16 COLORS



Joy Carpets & Co.

corporate headquarters: 2640 Lafayette Rd. Fort Oglethorpe, GA 30742

distribution center: 104 West Forrest Rd. Fort Oglethorpe, GA 30742

phone: 800.645.2787 fax: 706.866.7928

www.joycarpets.com

©2018 joy carpets & co. all rights reserved